

ACCELERATING KINGDOM MOVEMENT

YOU ARE HERE



YOUR CHURCH contributes a percentage of a financial gift to the Cooperative Program through the Baptist Resource Network, who shares the undesignated funds locally, nationally and internationally.



The **BAPTIST RESOURCE NETWORK**

- Church Servicing
- Church Resourcing
- Coaching/ Training
- Disaster & Crisis Relief
- Multiplying Church Centers
- Next Generation Ministry

retains a percentage of the Cooperative Program funds to

OUR COOPERATIVE PARTNERSHIP

A GETTING STARTED GUIDE TO MISSIONS GIVING THROUGH THE COOPERATIVE PROGRAM

THE NORTH AMERICAN BAPTIST BOARD IN LIGHT OF THE INTERNATIONAL MISSION BOARD (NABIM)

Missionaries in North America and all over the World

ETHICS & RELIGIOUS FREEDOM COMMISSION BOARD

Religious Liberty and Public Policy

SOUTHERN BAPTIST SEMINARIES

Education, Missions, Pastoral Care, Leadership, Theology, and Theologians



The **SOUTHERN BAPTIST CONVENTION**

retains a percentage of the Cooperative Program gifts to the Southern Baptist Convention to fund national and international missions, theological education and evangelism.



**Baptist Resource Network
Pennsylvania/South Jersey**



ACCELERATING KINGDOM MOVEMENT

Your giving to PA/SJ ministries is critical. The Baptist Resource Network (BRN), one of the largest non-South/Southern Baptist state conventions based on population, seeks to reach an estimated 14 million people in PA/SJ, who do not have a personal relationship with Jesus Christ. In fact, EVERY 4 MINUTES, one Pennsylvania or South Jersey DIES without Christ!

For more information on the Cooperative Program, visit www.bbrn.org or contact your pastor. Thank you for your support of the Kingdom!

Baptist Resource Network of Pennsylvania/South Jersey
4620 Fritchey St., Harrisburg, PA 17109
www.brnunited.org, helpdesk@brnunited.org

Copyright © 2024 Baptist Resource Network of
Pennsylvania/South Jersey

Content was gathered from www.sbc.net/cp
and other sources.





OUR **COOPERATIVE** PARTNERSHIP

A GETTING STARTED GUIDE TO MISSIONS GIVING THROUGH THE COOPERATIVE PROGRAM



WHAT IS THE COOPERATIVE PROGRAM?

The Cooperative Program is Southern Baptists' unified plan of giving through which cooperating Southern Baptist churches give a percentage of their undesignated receipts in support of their respective state convention and the Southern Baptist Convention missions and ministries.

"Simply put, it is the ability to say, 'What can we do together?' This is coming together as a multitude of churches and how we can have a greater impact towards the Great Commission."

NOELSON CHERY, BAPTIST RESOURCE NETWORK ETHNIC CHURCH ADVANCEMENT CONSULTANT

WHY WAS THE COOPERATIVE PROGRAM CREATED?

Since their earliest days, the churches of the Southern Baptist Convention have been committed to funding international missions, national missions, seminaries, and other ministries. However, prior to 1925, the prevailing fundraising method was for every entity to send representatives to local churches to plead their cause and take up offerings to fund their ministries. The continual appeals for money exhausted local churches and kept local pastors out of their pulpits multiple weeks per year.

At the 1924 annual convention in Atlanta, M.E. Dodd, pastor of First Baptist Church, Shreveport, La., and chairman of the SBC's Committee on Future Program, recommended a revolutionary solution to the funding dilemma. His plan—known today as the “Cooperative Program”—asked the individual churches of the convention to commit a percentage of their total receipts each year to fund state-level, national, and international ministries. Dodd's plan was adopted at the 1925 convention in Memphis and continues to fund the cooperative gospel efforts of the SBC to this day.



SOURCE: [HTTPS://ERLC.COM/RESOURCE/
HOW-THE-COOPERATIVE-PROGRAM-HAS-
FUNDED-SBC-MISSIONS](https://erlc.com/resource/how-the-cooperative-program-has-funded-sbc-missions)



**SHARE
THE
LOAD**

"Join heartily in the Cooperative Program for missions ... You, through your messengers, helped to make that program. It represents the combined thought and judgment of Southern Baptists - not my thought, not your thought, not that of any one man - but the combined thought of many. The hope of every Board and institution is the success of the Cooperative Program. Churches and pastors should get behind that program with all their might."

GEORGE W. MCDANIEL, PASTOR OF FIRST BAPTIST CHURCH,
RICHMOND, VA., AND PRESIDENT OF THE 1925 CONVENTION

(SOURCE: RELIGIOUS HERALD, MAY 28, 1925)

HOW DOES IT WORK?

It begins with you.

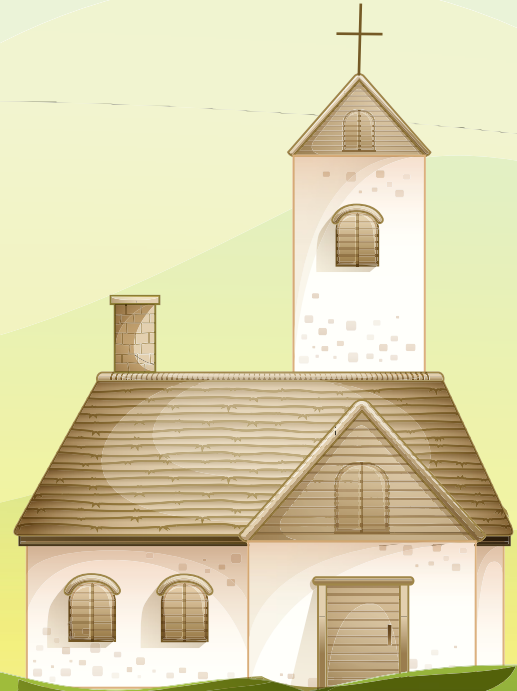
You give yourself first to God (II Cor. 8:5). Next, out of gratitude and obedience to God for what He has done for you, you commit to give back to Him, through your church, a portion of what He provides. This is commonly called a tithe and represents ten percent of your income (Leviticus 27:30, Malachi 3:10).



YOU
give a tithe and
offering to your
church



**Your Church
decides
the next step.**



Every year, your church prayerfully decides how much of its undesignated gifts will be committed to reaching people in your state and around the world through the Cooperative Program. This amount is then forwarded to the Baptist Resource Network of Pennsylvania/South Jersey.

NEXT EXIT

CP

**LOCAL MISSIONS
AND MINISTRY**



Messengers at the Baptist Resource Network's annual business session ...

... from your church and other churches across Pennsylvania/South Jersey decide what percentage of Cooperative Program gifts contributed by local congregations stay in Pennsylvania/South Jersey to support local missions and ministries. The percentage to be forwarded to the SBC for North American and international missions and ministries is also determined at this time.

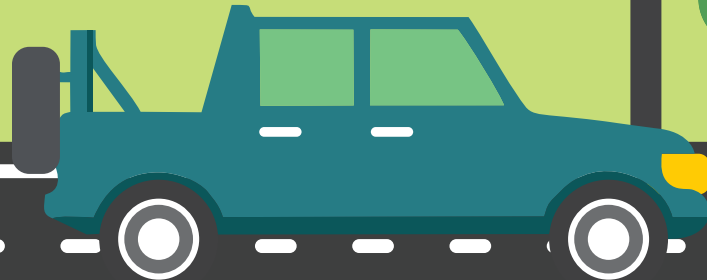


The BAPTIST RESOURCE NETWORK

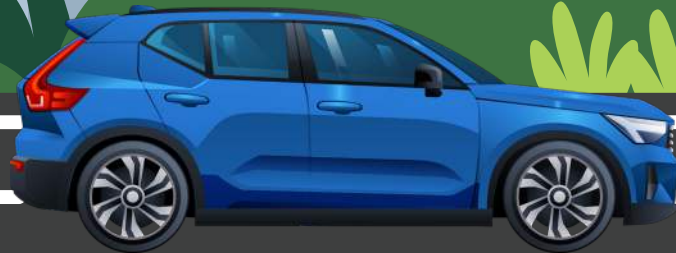
retains a percentage of the
Cooperative Program for ministries
in Pennsylvania/South Jersey.

These ministries include:

- Church Servicing
- Church Resourcing
- Coaching/Training
- Disaster & Crisis Relief
- Multiplying Church Centers
- Next Generation Ministry
- Partnerships
- Pastor/Staff Benefits
- *And more!*



Then, messengers at the Southern Baptist Convention Annual Meeting...



... from across the country decide how the gifts received from the states will be distributed among SBC entities. These gifts are used by SBC entities to send and support missionaries; address social, moral, and ethical concerns relating to our faith and families; and train pastors and other ministry leaders.

An additional 100% of gifts from individuals and churches given through the Lottie Moon Christmas Offering for International Missions and the Annie Armstrong Easter Offering for North American Missions goes directly to missionaries on the field.

**THE NORTH AMERICAN
MISSION BOARD (NAMB)
& THE INTERNATIONAL
MISSION BOARD (IMB):**

**Missionaries in North America
and all over the World**

**ETHICS &
RELIGIOUS LIBERTY
COMMISSION (ERLC):**

**Religious Liberty
and Public Policy
Representation**

**SOUTHERN BAPTIST
SEMINARIES:**

**Gateway, Midwestern, New
Orleans, Southeastern, Southern,
and Southwestern**

Barry Whitworth offers personal testimony about the impact of Cooperative Missions

Referring to himself as a “byproduct” of the Cooperative Program (CP), Barry Whitworth, executive director of the Baptist Resource Network of Pennsylvania/South Jersey, has benefited at almost every stage of his life from cooperative generosity.

“The Cooperative Program was used to help start churches in locations where I grew up in Maryland, and my church family was a part of the Cooperative Program,” said Whitworth, who also has served as a pastor, church planter, church planting strategist, and statewide church planting director.

Later, when Whitworth felt the Lord calling him into ministry, he attended Southeastern Baptist Theological Seminary, one of the Southern Baptist Convention’s six seminaries that are funded by the Cooperative Program.

At the local church level, as a pastor and planter, Whitworth continued to

see the power of cooperative giving and championed the CP as it fueled not only the Kingdom work he was doing, but that of so many others locally, nationally and globally.

“I was a cheerleader or champion of the Cooperative Program because the Cooperative Program had already blessed me, and I knew the value of what it did to not only bless guys that are preparing for ministry, but also how critical it was to send people who felt like God was calling them into international missions or church planting here in the United States or Canada,” he said.


Still a faithful champion of the CP, Whitworth now, as a state convention executive director, conveys this investment of cooperative missions to churches as something that is so much more than a “program.”

“I’ve had people say this to me:

‘When does this program end?’ You know, because it’s called a ‘program,’ and typically a program is for a time but not forever. It really doesn’t have an end...because it’s not a program, it’s a plan. It’s a unified giving plan,” said Whitworth.

“So, whatever a local church, which is autonomous, decides to give to the Cooperative Program, that’s a part of a unified plan. But the most beautiful thing, and the most important thing, is it all goes together as part of the plan to impact lostness here in the United States and Canada and around the world.”





**The bottom line - people
around the world hear the
gospel and receive Christ!**

**DON'T
STOP**

How to Give to Cooperative Missions

Many churches send their financial gifts and offerings via public post. We receive them (payable to Baptist Resource Network) at: Baptist Resource Network, 4620 Fritchey Street, Harrisburg, PA 17109.

However, in addition to mailing contribution checks, churches and individuals can give securely online through our easy-to-use online giving tool. See QR code below. Since we are a network of churches spanning such a large territory, two states, and with many partners around the country and world, we find that this safe and flexible option is the easiest way for churches and individuals to give to the Cooperative Program and/or other special offerings.

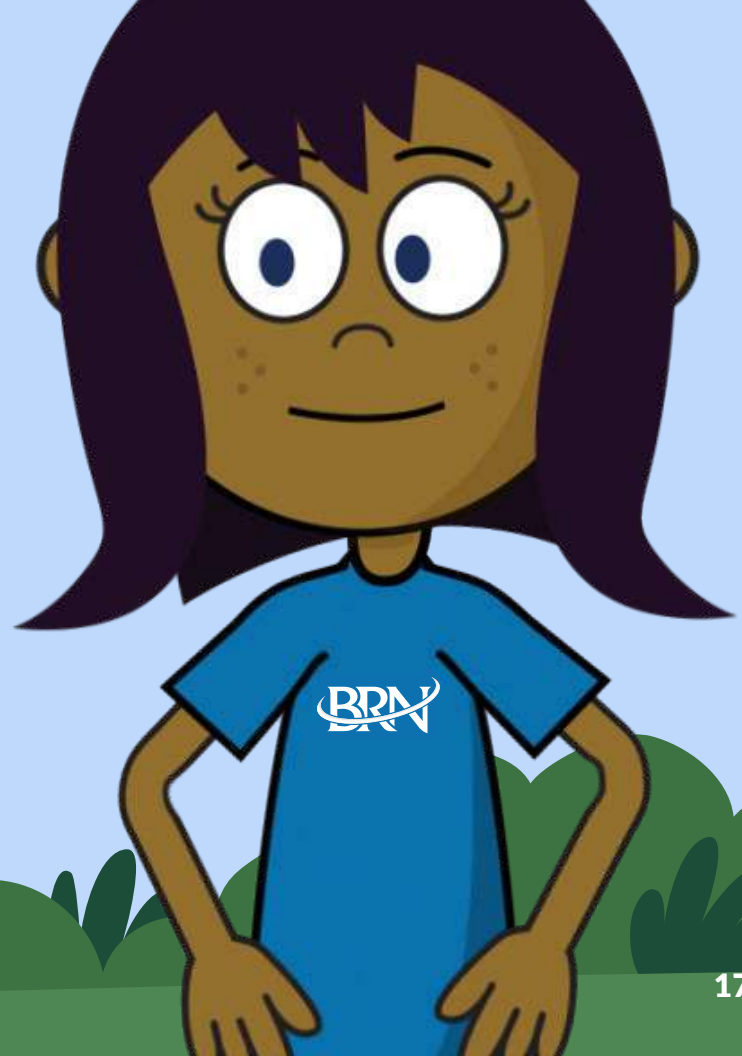
You may set up automatic payments or make a one-time donation. Here, you can easily manage your giving amount and specify where the funds should be applied.

If you have questions concerning giving or for more information about online giving, please reach out to the Help Desk by email at helpdesk@brnunited.org, or phone/text at (717) 652-5856.



Use this QR code to go to the online portal.

Since 1971, BRN churches have given more than \$33 million through the Cooperative Program to advance the Gospel!



Wait! I still have other questions!

WHEN DOES THE COOPERATIVE “PROGRAM” END?

Though named “Program” (we prefer “Missional Giving” or “Partnership”), the Cooperative Program has no ending date. It has already lasted 100 years; we hope it will continue for the next 100 years! It’s that good!

ARE YOU SAYING THAT MY CONTRIBUTION REALLY MAKES A DIFFERENCE?

Yes! Every individual and every church, no matter how small or large, has the opportunity to impact lostness all over the world!

WHAT IF MY CHURCH WOULD LIKE TO CHOOSE WHICH ENTITIES RECEIVE/NOT RECEIVE FUNDS?

PA/SJ Baptists can choose which SBC entities receive their church’s Cooperative Program contributions. If your church would like more information, email the BRN’s Help Desk at helpdesk@brnunited.org. You may also call or text the Help Desk at (717) 652-5856.

IS THE COOPERATIVE PROGRAM BRN'S ONLY FUNDING SOURCE?

Great question! While the majority of our budget comes from the Cooperative Program, we also rely on our annual #LovePASJ Missions Offering to support ministries right here in our own backyard; the PA/SJ Impact Funds, which allows you to give to specific projects close to your heart; and the #LegacyPASJ Fund, in which you can financially give through your resources and estate to benefit the ministry of the Baptist Resource Network and its churches.

WHAT ARE THE GREATEST BENEFITS TO GIVING TO THE COOPERATIVE PROGRAM?

In addition to the tax implications of giving to a non-profit (your church and/or the Baptist Resource Network), the Cooperative Program allows you to touch people all over the world. Missionaries and entities no longer need to solicit funds from individual churches, because they can rely on the unified giving mechanism that brings all the churches' giving into one big pool to distribute. It is genius!

WHAT IF I STILL HAVE OTHER QUESTIONS?

We are happy to answer any questions you may have. Visit online at brnuned.org/cp and brnuned.org/give, or email the Help Desk at helpdesk@brnuned.org. You may also call or text the Baptist Resource Network's Help Desk at (717) 652-5856. Thanks for asking!

COOPERATIVE PROGRAM GIVING IN PENNSYLVANIA/SOUTH JERSEY & BEYOND

**ACCELERATING
KINGDOM
MOVEMENT
THROUGH
MISSIONAL
GIVING**

**YOU
ARE
HERE**



YOU
give a tithe and
offering to your
church



YOUR CHURCH contributes a percentage or a financial gift to the Cooperative Program through the Baptist Resource Network, who shares the undesignated funds locally, nationally and internationally.



**The BAPTIST
RESOURCE
NETWORK**

retains a percentage of the Cooperative Program for ministries in Pennsylvania/South Jersey. These ministries include:

- Church Servicing
- Church Resourcing
- Coaching/Training
- Disaster & Crisis Relief
- Multiplying Church Centers
- Next Generation Ministry
- Partnerships
- Pastor/Staff Benefits
- And more!

†**PA/SJ**
%



**THE NORTH AMERICAN
MISSION BOARD (NAMB)*
& THE INTERNATIONAL
MISSION BOARD (IMB):**

Missionaries in North America and all over the World

**ETHICS &
RELIGIOUS LIBERTY
COMMISSION (ERLC):**

Religion: Liberty and Public Policy Representation

**SOUTHERN BAPTIST
SEMINARIES:**

Gateway, Midwestern, New Orleans, Southeastern, Southern, and Southwestern

*NAMB graciously provides funds back to the BRN to assist with church planting, evangelism, and hunger grants.



The SOUTHERN BAPTIST CONVENTION also receives a percentage of the Cooperative Program gifts to the Southern Baptist Convention to fund national and international missions, theological education, and religious liberty. An additional 100% of gifts from individuals and churches given through the Little Moon Christmas Offering for International Missions and the Annie Armstrong Easter Offering for North American Missions goes directly to missionaries on the field.

†**SBC**
%



Your giving to PA/SJ ministries is critical. The Baptist Resource Network (BRN), one of the largest non-South Southern Baptist state conventions based on population, seeks to reach an estimated 14 million people in PA/SJ, who do not have a personal relationship with Jesus Christ. In fact, EVERY 4 MINUTES, one Pennsylvanian or South Jerseyan DIES without Christ!***

**DON'T
STOP**

***This statistic is based on a conservative national average of 85% lostness and current vital statistics from the PA and NJ Departments of Health.

THE COOPERATIVE PROGRAM IS THE FINANCIAL FUEL FOR REACHING EVERY PERSON FOR JESUS CHRIST IN EVERY TOWN, EVERY CITY, EVERY STATE, AND EVERY NATION.