

*Showing  
Compassion*  
IN TRIAGE/TRAUMA

Every 4.2 minutes, a  
person in PA/SJ dies  
without Christ!

SH  W

WHO'S ON YOUR WATCH?



# Showing Compassion IN TRIAGE/TRAUMA

## Contents

What is Compassion Ministry? .....	4
Three Strategic Pathways in Compassion Ministry .....	7
Various Gateways in Compassion Ministry .....	8
Which Ministry is God Calling Me to Do?) .....	9
The Triage/Trauma Pathway.....	10
Ministry Process .....	12
Discovery.....	14
Dialogue.....	20
Decision .....	24
Deployment.....	26

# WHAT IS COMPASSION MINISTRY?

Who is God? When posed with this question the writers constantly used these words to describe God's character...

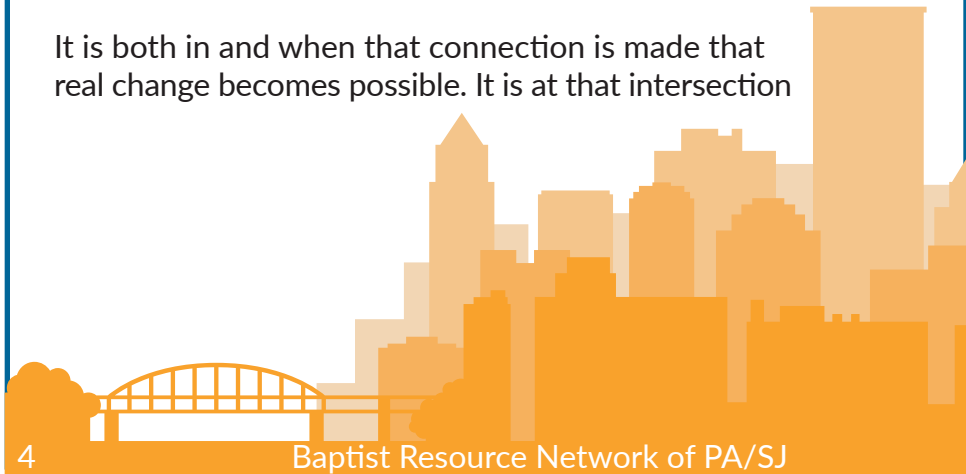
“COMPASSIONATE and GRACIOUS, SLOW TO ANGER overflowing with LOVE and FAITHFULNESS” (Exodus 34:6).

The very first word they used was compassion. Compassion was no doubt what so many people witnessed when they encountered the Lord Jesus. He never sent anyone away, and He always showed empathy and felt concern. Bartimeus, the blind man, would agree. So would the ailing woman who was so desperate that she grabbed at Jesus' robe in the middle of a large crowd. They are just a few of the many who knew Jesus loved and cared for everyone.

You see, compassion isn't something that is taught; it is felt and experienced. Therefore, COMPASSION MINISTRY is so vital to each one of us and our mission to tell the world about Jesus. It is the opportunity we have been given to both declare and demonstrate the Good News of the Gospel in our neighborhoods and communities everyday.

**COMPASSION MINISTRY defined is connecting the body of Christ (the Church) to the broken and needy (the world).**

It is both in and when that connection is made that real change becomes possible. It is at that intersection



that we sense God's presence and see God's power at work in our lives and communities. Compassion Ministry at its core is us busily seeking opportunities to do what Jesus did and meeting people right where they are and through compassion loving them to where God wants them to be.

Compassion is, no doubt, an emotion, but it is an emotion that arises in us to move us to action. God describes it like a mother and her love for a child in Isaiah...

*"Can a mother forget the baby at her breast and have no compassion on the child she has borne? Though she may forget, I will not forget you!" (Isaiah 49:15 NV)*

God was speaking about Israel and how they, like us so many times, had abandoned God or forgot him. Yet, God said no matter how many times we forgot Him, His compassion for us compels Him to never forget us or abandon us.

We have people and communities of hurting and broken people all around us. Regardless of their view of God and who He is, we know His view of them. It is a view of compassion and love. It is the same way we need to look at our neighbors and look at our communities. We must see what He sees and feel what He feels so that we can respond in obedience to do what He asks.

Now is the time for us to **SHOW**  
His compassion for our communities.

THEN THE KING WILL SAY TO THOSE ON HIS RIGHT,  
“Come, you who are blessed by my Father, inherit the Kingdom prepared for you from the foundation of the world. For I was hungry and you gave me food, I was thirsty and you gave me drink, I was a stranger and you welcomed me, I was naked and you clothed me, I was sick and you visited me, I was in prison and you came to me.”

THEN THE RIGHTEOUS WILL ANSWER HIM, SAYING,  
“Lord, when did we see you hungry and feed you, or thirsty and give you drink? And when did we see you a stranger and welcome you, or naked and clothe you? And when did we see you sick or in prison and visit you?”

AND THE KING WILL ANSWER THEM,  
“Truly, I say to you, as you did it to one of the least of these my brothers, you did it to me.”

Matthew 25:35-40 ESV

# THREE STRATEGIC PATHWAYS IN COMPASSION MINISTRY

While there are many needs that exist in every community, we have found three strategic PATHWAYS that have the potential for us to do the most good and produce the most fruit in our region.

They are in the arenas of Education, Food Insecurity/Poverty, and Triage/Trauma. Each of these PATHWAYS have several ways that you and your church can mobilize to help meet needs in your community.

## **EDUCATION:**

There is a myriad of opportunities tied to the discipline of education, such as supporting local schools and their students, faculty and staff, teaching English to international residents, or offering computer classes for the disenfranchised.

## **FOOD INSECURITY/POVERTY:**

There are families around us who lack consistent access to enough food and other basic essentials. Churches can meet these physical needs and their spiritual needs.

## **TRIAGE/TRAUMA MINISTRY:**

When a crisis comes (whether a natural disaster, a crisis pregnancy, or abuse), churches can be on the front lines to help through disaster relief, counseling, chaplaincy, and more.



# VARIOUS GATEWAYS IN COMPASSION MINISTRY

Gateways are the doors or bridges in our lives and communities that we can walk through to see the Gospel planted and advanced. A gateway is a specific need that exists in your context that you could have the opportunity to help meet.

**Here is a sample list of 50 possible gateways that exist in many communities:**

- |   |  |
|---|--|
| 1. Housing  | 26. Education                              |
| 2. Single Parents                                 | 27. Gender Identity                        |
| 3. Life Controlling Issues                        | 28. LGBTQ+ Community                       |
| 4. Youth  | 29. Literacy                               |
| 5. Disaster Relief                                | 30. Tutoring/After-School Programs         |
| 6. Senior Citizens                                | 31. Child Care                             |
| 7. Homebound Seniors/Disabled                     | 32. Mental Health Counseling               |
| 8. Veterans                                       | 33. Biblical Manhood & Husbandry           |
| 9. First Responders                               | 34. Hospice                                |
| 10. Teachers                                      | 35. Life Skills                            |
| 11. Special Needs Families                        | 36. Financial Counseling                   |
| 12. Health Care Workers                           | 37. Micro-Relief-Temporary Housing         |
| 13. Poverty                                       | 38. Transportation                         |
| 14. ACES Initiative from Dept. of Education & CDC | 39. Women's Shelters                       |
| 15. Premarital Couples                            | 40. Homeless Shelters                      |
| 16. Foster Families                               | 41. College Students/Campuses              |
| 17. Adoptive Families                             | 42. New Residents                          |
| 18. Homeless Families/Children                    | 43. Sports Leagues/Recreation              |
| 19. Displaced Families                            | 44. Small Business Owners                  |
| 20. Addiction/Recovery                            | 45. Section 8 Housing                      |
| 21. Suicide Prevention                            | 46. Incarcerated and Their Families        |
| 22. Prisoner Re-Entry                             | 47. Crisis Pregnancy                       |
| 23. GED   | 48. Job Placement                          |
| 24. ESL Classes                                   | 49. Thrift Store/Food Pantry               |
| 25. Immigration Resettlement                      | 50. Neighborhood Events/Community Calendar |





# HOW DO I KNOW WHICH MINISTRY GOD CALLING ME TO DO?

You know God is tugging at your heart to do ministry, but what is His specific calling for you and your church?

Using the acronym, EMERGE, you can discover how He wants to use you!

**E**

EXPERIENCE different kinds of ministries & opportunities

**M**

MEET the needs you see all around you

**E**

ENGAGE God through prayer and scripture to discern His will

**R**

RESPOND to God's direction for your life and mission

**G**

GIVE time for God to move in your ministry and mission

**E**

EVALUATE your joy and passion as you serve in this ministry

# THE TRIAGE/TRAUMA PATHWAY:

This pathway is one that is more likely to be felt rather than discussed openly in your community. Triage is the process of us determining the urgency of the need and our capacity to assist in the process of recovery. Trauma is the wound and pain that comes from the experience of individuals or communities. Compassion, empathy, love and care are all keys to helping in this pathway.

These needs can come in a variety of ways. It could be a natural disaster like a flood, tornado or hurricane that can bring devastation to a community. It could be an unplanned pregnancy, death, or disease that fractures a family. It could be imprisonment, crime, drugs, or injustices that destroy communities. It could come from some type of abuse – physical, emotional, or substance. The reality is this. Pain, loss, and hurt touches us all. Yet, it doesn't have to be the thing, event, or tragedy that defines us. It can be the very thing that transforms us when we discover the loving and compassionate God who can love us right where we are and whose love can take us where He wants us to be. That is a place of hope and healing. Compassion Ministry in this pathway helps others find this hope and healing.

There were 243,622 overdose deaths in Pennsylvania and New Jersey, last year according to the CDC. Hurricane Ida left many cities and townships under water in Pennsylvania in 2021. There were over 5,000 substantiated child abuse claims in Pennsylvania in 2021 while New Jersey was among the top 5 five U.S. states to see a rise in adolescent suicide deaths during the pandemic. These are just a few numbers that illustrate the range of issues facing our communities and cities. It is important for us to stay engaged and look for ways to be the GOOD NEWS of the Gospel in our communities.



Below are some ministry opportunities to display compassion in the strategic pathway of triage/trauma:

**ADDICTION/ALCOHOLISM RECOVERY:** It is crucial that we make our churches a safe, welcoming place for the growing number of families suffering from alcoholism and addiction. Churches can offer workshops or 12-step programs to help support addicts and their families, and they can otherwise offer extended care to children and adults affected by the loneliness and pain substance abuse brings.

**DISASTER RELIEF/READY CHURCH:** A disaster is a natural or manmade event that affects a lot of people, has an element of danger, and local resources are not sufficient to meet the needs without assistance. Southern Baptist Disaster Relief provides help, hope, and healing to those experiencing a disaster. Ready Church helps churches prepare in advance for these ministries.

**MENTAL HEALTH CHALLENGES:** Churches may work with local counselors and Christian therapists by offering them spaces to serve. They may also receive trauma training and offer support groups for various needs, such as grief support, for families and individuals.

**PREGNANCY RESOURCE CENTERS:** Pregnancy resource centers provide emotional support, material assistance, and education to women and men facing an unexpected or distressing pregnancy.

**PRISONER MINISTRY:** Chaplains and church groups, with permission, can minister to inmates through general education, technical and business classes; provide mental health support; and host chapels, introducing them to the hope of Christ. Churches can support those who are reentering society with job and life skills training and placement, and welcoming support. Churches may interact with other agencies to help reduce recidivism (repetitive offenses).



# MINISTRY PROCESS

Compassion Ministry is vital for every follower of Jesus and His church. It is our opportunity to both share and show the love of Christ. Never forget that Compassion Ministry isn't just taught to our churches or communities, but it is something that should be experienced together. There are three keys to having an effective Compassion Ministry in any community.

**Create Opportunities:** Look around your community and see where there are opportunities for you to bring the power of the Gospel to bear.

**Connect People:** Connection is the catalyst that unleashes the movement of the Holy Spirit in both the lives of the church and the community.

**Cultivate Relationships:** Relationships are essential to the success of the movement. Relationships take time to cultivate and may require some sacrifices along the way. Look for ways to build those relationships and partnerships so that you can see the transformation happen.

So, what's next? How do I move from being just located in a specific community to becoming an active presence in that community?

## THERE ARE FOUR STAGES TO SEEING THIS HAPPEN:

### DISCOVERY STAGE:

This is the stage when you and your leaders look around, look within, and look up so that you can go out. Look around your community and discover what are the particular needs that exist. Look for the greatest areas of brokenness you see and lean into them and see what you discover. Now take the time to look within your church and see what resources you have to help meet those needs. Ask the key questions and leaders what they



think, see, and feel about what you've discovered. Then take the time to look up to God and pray for His wisdom and direction on taking the next step.

### **DIALOGUE STAGE:**

This is the stage when you take the time to meet with key people in your community and your church. This is the time to listen and learn from those community leaders of what the specific needs are and how you could help serve and assist them. Then begin the process of enlisting leaders in your church and community to help you as you prepare to be a difference maker. You will also need to equip and train any of the leaders, so they feel confident on what their role is in meeting the need.

### **DECISION STAGE:**

This is the stage where you take all that you have learned up to this point and begin to make some specific decisions on the direction you feel led to go. It is important in this stage to remember that small steps are much better than big steps as you move towards helping meet any need. Consistency and being able to deliver what is promised goes a long way in establishing strong relationships.

### **DEPLOYMENT STAGE:**

This is the most fun stage of all. This is where you begin to engage and start your journey of bringing the hope of the Gospel to your community. You take those steps you have prepared for and begin to bring the light to the brokenness. Always evaluate what you do so that you can learn, adjust, and grow as you serve. We suggest beginning with short-term goals and commitments so that you can see and evaluate any progress you make.

*WHATEVER YOU DO, do it from the heart, as something done for the Lord and not for people, knowing that you will receive the reward of an inheritance from the Lord. You serve the Lord Christ (Colossians 2:23-24).*

# DISCOVERY:

## TRIAGE/TRAUMA:

Below are some questions to prompt your discovery of your chosen compassion ministry opportunity (such as, alcoholism/addiction recovery, disaster relief, mental health counseling, pregnancy resource centers, and ministry to prisoners).

What is the brokenness that you see or are aware of in your community concerning this pathway?

---

---

---

---

---

How can the Gospel be the Good News to that brokenness?

---

---

---

---

---



What are the active related organizations in your community?  
(List schools, other ministries, etc.)

---

---

---

---

---

Who is being served (and not being served) by these organizations?

---

---

---

---

Who are the gatekeepers (leaders, officials, decision-makers) of those organizations? As appropriate, list the names and contact information for those you'd like to meet.

---

---

---

---

---

---

---

---

---

What communication channels exist for you to connect with the organization to initiate ministry? (List phone numbers, websites, social media, and email addresses.)

---

---

---

---

---

What are the opportunities for you to build bridges and meet needs in this pathway? Of the above organizations, which could use your church's assistance?

---

---

---

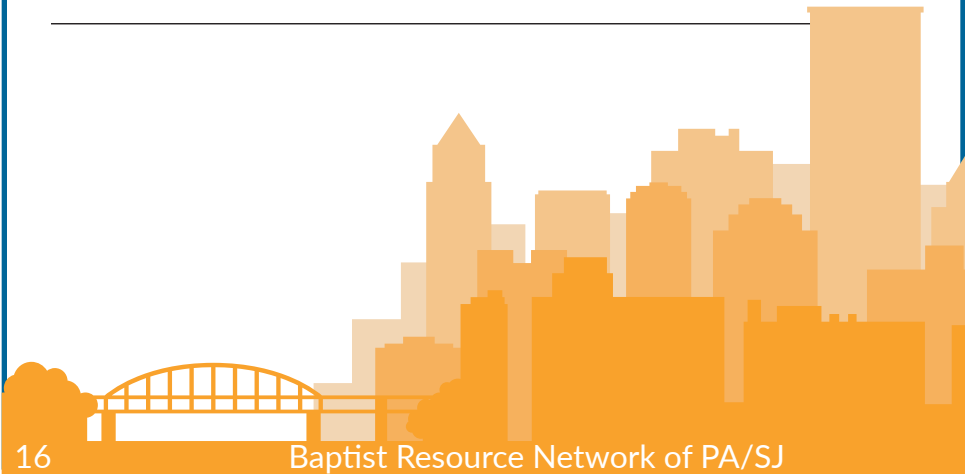
---

Are there any connections or open doors already established that your church can leverage with these organizations?

---

---

---





What challenges or obstacles can you identify that might prevent you or your church from engaging in this ministry?

---

---

---

How much time are you willing to commit to provide the assistance required?

---

---

---

What resources would you need?

---

---

---

---

What is your next step?

---

---

---

---



## INTERVIEWS

### REV. RAFAEL TORRES, CHAPLAINCY PROGRAM DIRECTOR AND VOLUNTEER COORDINATOR AT STATE CORRECTIONAL INSTITUTION (SCI) – PHOENIX

Rafael Torres works as the Chaplaincy Program Director and Volunteer Coordinator at SCI – Phoenix in Collegeville, Pennsylvania. Housing nearly 4,000 inmates, SCI – Phoenix is deemed the largest correctional institution in the state.

“Whatever faith group you can think of, they’re behind prison walls,” said Torres. Since April of 2007, Rev. Torres has worked day in and day out with inmates, helping them process their circumstances and advocating for them to seek redemption, legally and spiritually.

“The person that committed that crime – 20 years later – is not that same person. They’ve had time to grow, they’ve had time to understand the impact of their crime, what they have done, what they’ve taken away, [and] what they can never give back,” he said. “All they can hope for is to get a chance to prove them right, that giving them another opportunity would be a good thing.”

### REV. KENTON HUNT, PA/NJ DIRECTOR OF DISASTER RELIEF, BAPTIST RESOURCE NETWORK

In addition to training and deploying volunteers to actively serve in disaster relief, Kenton Hunt, Disaster Relief Director for Pennsylvania and New Jersey, helps churches to be ready to respond when a disaster or crisis strikes.

“Ready Church” provides tools to help you understand your community and make disciples. The initiative also prepares your church families for disaster by helping them anticipate hazards in their community, develop a plan to not simply survive a disaster, but to bring Jesus into it, and to develop strategies for response.

Kenton and his team also creates a training process with relevant content that will strengthen your church’s ability to be a beacon in the community. He prepares leaders



for disaster by equipping them with biblical response management tools that are situationally adaptable, by acquainting them with the culture of emergency management, and by helping to understand the environment of disaster volunteerism.

A “Ready Church” is committed to meeting critical needs through preparation, connection, and response. You are a “Ready Church” when you:

1. Assess Your Community (understand your context and identify needs)
2. Target Needs (seek God’s leading in meeting needs He has helped you identify)
3. Train to the Task (equip yourself with knowledge, skills, and strategies to respond to real needs quickly, confidently, and competently)
4. Send “GO Teams” (extend your church’s reach by sending prepared missionaries into your communities to bring help at just the right time)

Interested in learning more? Contact Kenton at [KentonH@brnuned.org](mailto:KentonH@brnuned.org).

#### PASTOR TOM DAWSON, THE SOAR CHURCH, WOODBINE, N.J.

The SOAR Church in Woodbine, New Jersey, has engaged in compassion ministry by partnering with local police departments, colleges, the prosecutor’s office and other agencies. “One of the biggest things that we got involved with [was] when George Floyd was killed in Minneapolis...protests were going on all over the place,” said Pastor Tom Dawson. “In our community, there was a protest out in the street...it was going on all day.”

After being contacted by the Prosecutor’s Office late at night, Dawson and one of his associate ministers went down to the protests to help bring peace. “I kind of got in the street with them and was talking and it was a long time, but they knew who I was because of all of the outreach,” said Dawson. “The protesters listened to us and not the police. Why? Because we have relationships with family members, and they saw all the outreach we were doing in the community. That protest ended peacefully with prayer in the street.”

Visit [brnuned.org/news](http://brnuned.org/news)  
for the full stories and more!



# DIALOGUE:

## TRIAGE/TRAUMA:

Once you've had a chance to explore the different ministry options, here are some questions to discuss with your ministry team and those with whom you seek to minister.

What did you learn from meeting with the gatekeepers/ organizations?

---

---

---

Based on what you have discovered, where do you sense God is encouraging your church to serve?

---

---

---

What kind of needs could your church meet? How do the skills of people in your church match up with those needs?

---

---

---



List skills and resources from your church or others in the community that you have available to meet those needs.

---

---

---

---

How are you going to enlist or recruit volunteers (from your church or the community)?

---

---

---

What training or clearances would volunteers need to have before engaging in ministry?

---

---

---

---

As you pray, write down what you hear God saying about this ministry opportunity:

---

---

---

---

---

## INTERVIEW

If you and/or your group want an example of how one ministry is dealing with a very specific problem that some of our neighbors are facing, a Crisis Pregnancy Center is a great example to examine. Jennifer Musser, LPC, serves as a community engagement director for one and was willing share some of her ideas with us.

### 1. IN THE CONTEXT OF THOSE THESE CENTERS MINISTER TO, WHAT IS NEEDED?

Jennifer immediately answered this question with the unconditional love of Jesus Christ as their client's greatest need. Christian pregnancy resource centers are designed that every client hears the Gospel in a relevant way on each visit. Then, clients need hope, encouragement, and friendship. They need a safe space without judgment to talk, to feel, to cry. They need to know they are not alone and that they have a place where they belong. The ministries want to make them feel genuinely loved no matter what their story is. Finally, they do need resources. They need anything and everything that is essential for a newborn baby: diapers, formula, clothing, and often larger items. Jennifer reminded me that you cannot even drive home with a newborn infant if you do not own a car seat.

### 2. TELL ME ONE STORY OF HOW MEETING NEEDS HAS DIRECTLY LED TO CHANGING LIVES WITH THE GOSPEL?

When asked for a story, Jennifer had one that she was eager to share. Recently, a married couple needing resources to help provide for their first child,

also chose to participate in her ministry center's six-week prenatal parenting classes. Through these classes the couple formed a relationship with their teacher/mentor. Not only did these soon to be parents receive the resources they needed and learn parenting skills, but they heard the Gospel in each session. After the class was concluded, on the seventh week, the ministry center threw the couple a baby shower. Jennifer loves these showers. Sometimes it might be the only celebration the clients have. The clients can invite their extended family to join them for the showers and any available ministry staff or volunteers make a point to stop by. Both parents after hearing the Gospel multiple times decided to make a profession of faith in Jesus during their baby shower. When someone comes to Christ through this ministry, they are encouraged to join a Bible Study and one of the many local churches that support the ministry.

### 3. WHAT WOULD YOU ADVISE A GROUP'S FIRST STEP IN MINISTERING TO THESE NEEDS BE?

The first step, Jennifer suggests, is to reach out and get in contact with a local Christian pregnancy resource center. Establish a personal connection with one of the employees or volunteers. Then there are three ways to engage:

- 1) Pray. Pray for the women and their families. Pray for the volunteers, staff and boards of the center.
- 2) Volunteer. Whatever skills you have could be of use for the pregnancy center. See where and how you could fit into their ministry.
- 3) Donate. Please consider giving and raising money or resources for your local center.

# DECISION:

## TRIAGE/TRAUMA:

This is the stage where you take all that you have learned up to this point and begin to make some specific decisions on the direction you feel led to go.

Based on what you have discovered, where do you sense God is encouraging your church to serve? Who are you serving?

---

---

---

What do you need to serve them well?

---

---

---

When and how long will you serve?

---

---

---





How can you evaluate and adjust as necessary?

---

---

---

What expectations do you have for all involved? Write them down in a Joint Venture Partnership agreement\* so there isn't any confusion. Adapt as needed.

---

---

---

---

---

---

---

As you pray, write down what you hear God saying now about this ministry opportunity:

---

---

---

---

*\*Contact BRN's Help Desk for more information.*



# DEPLOYMENT:

## TRIAGE/TRAUMA:

This is where you begin to engage and start your journey of bringing the hope of the Gospel to your community.

How can you assist or encourage your volunteers as they serve?

---

---

---

How do you evaluate and adjust as you serve?

---

---

---

How do you celebrate your successes and your volunteers?  
(write specific ways)?

---

---

---

---



How do you communicate with the gatekeepers to find out how you are doing/did?

---

---

---

---

---

What do you do next?

---

---

---

---

---

As you pray, write down what you hear God saying now about this ministry opportunity:

---

---

---

---

---

---





# SHOW

## WHO'S ON YOUR WATCH?

*Every 4.2 minutes, a person in PA/SJ dies without Christ. Let's show Christ's love before it's too late!*

#LovePASJ's Phase 2 kit seeks to help churches evangelize the neighborhoods where they did exegesis and prayerwalking. As a natural next step to learning about their communities, Phase 2 of "KNOW, SHOW, GROW" offers resources to equip participants to start meeting revealed needs through compassion ministries and evangelism. This year's kit also highlights evangelism resources available for individuals and groups.

*Haven't had a chance to work on Phase 1 yet? No worries! Contact the BRN's Help Desk ([helpdesk@brnunited.org](mailto:helpdesk@brnunited.org)) today to get your kit!*

[www.lovepasj.com](http://www.lovepasj.com)

# FREE RESOURCES

to help you better love your neighbors

Phase 2 resources include Compassion Ministry Planning Guides, a Prayer Guide, Small Group Bible Study, Evangelism Tracts, an EvangeCube, a Gospel Presentation App, and more!



KNOW | SHOW | GROW

Order your kit at  
[LOVEPASJ.COM](http://LOVEPASJ.COM)



*For additional resources and information  
on loving your community and sharing the Gospel,  
please reach out to the*

*Baptist Resource Network of PA/SJ:*

*email: [helpdesk@brnunited.org](mailto:helpdesk@brnunited.org)*

*call or text: (717) 652-5856*

*or visit online:*

*[www.brnunited.org](http://www.brnunited.org) | [www.lovepasj.com](http://www.lovepasj.com)*





A stylized graphic of a city skyline in shades of blue and orange. The skyline features various building silhouettes, including a prominent tall building with a pointed top. In the foreground, there are several smaller house-like shapes with gabled roofs and windows. The background is a gradient of orange and yellow, suggesting a sunset or sunrise.

Baptist Resource Network of PA/SJ  
4620 Fritchey Street, Harrisburg, PA 17109  
[brnunited.org](http://brnunited.org) | [lovepasj.com](http://lovepasj.com)

*“We must do the works of Him who sent Me while it is day.  
Night is coming when no one can work” (John 9:4).*