

Showing
Compassion
IN EDUCATION

Every 4.2 minutes, a
person in PA/SJ dies
without Christ!

SH  W

WHO'S ON YOUR WATCH?



Showing Compassion IN EDUCATION

Contents

What is Compassion Ministry?	4
Three Strategic Pathways in Compassion Ministry	7
Various Gateways in Compassion Ministry	8
Which Ministry is God Calling Me to Do?	9
The Education Pathway.....	10
Ministry Process	12
Discovery.....	14
Dialogue.....	20
Decision	24
Deployment.....	26

WHAT IS COMPASSION MINISTRY?

Who is God? When posed with this question the writers constantly used these words to describe God's character...

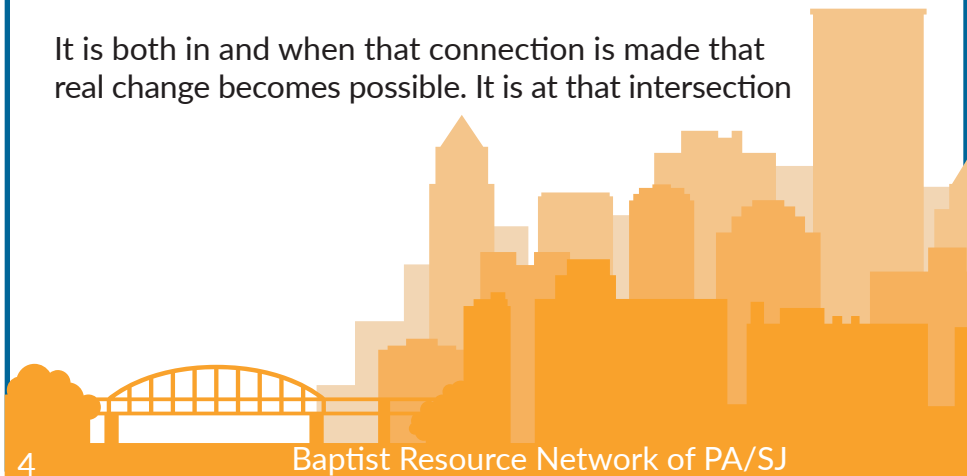
“COMPASSIONATE and GRACIOUS, SLOW TO ANGER overflowing with LOVE and FAITHFULNESS” (Exodus 34:6).

The very first word they used was compassion. Compassion was no doubt what so many people witnessed when they encountered the Lord Jesus. He never sent anyone away, and He always showed empathy and felt concern. Bartimeus, the blind man, would agree. So would the ailing woman who was so desperate that she grabbed at Jesus' robe in the middle of a large crowd. They are just a few of the many who knew that Jesus loved and cared for everyone.

You see, compassion isn't something that is taught; it is felt and experienced. Therefore, COMPASSION MINISTRY is so vital to each one of us and our mission to tell the world about Jesus. It is the opportunity we have been given to both declare and demonstrate the Good News of the Gospel in our neighborhoods and communities everyday.

COMPASSION MINISTRY defined is connecting the body of Christ (the Church) to the broken and needy (the world).

It is both in and when that connection is made that real change becomes possible. It is at that intersection



that we sense God's presence and see God's power at work in our lives and communities. Compassion Ministry at its core is us busily seeking opportunities to do what Jesus did, meeting people right where they are, and through compassion loving them to where God wants them to be.

Compassion is no doubt an emotion, but it is an emotion that arises in us to move us to action. God describes it like a mother and her love for a child in Isaiah...

"Can a mother forget the baby at her breast and have no compassion on the child she has borne? Though she may forget, I will not forget you!" (Isaiah 49:15 NV)

God was speaking about Israel and how they, like us so many times, had abandoned God or forgot Him. Yet, God said no matter how many times we forgot Him, His compassion for us compels Him to never forget us or abandon us.

We have people and communities all around us of hurting and broken people. Regardless of their view of God and who He is, we know His view of them. It is a view of compassion and love. It is the same way we need to look at our neighbors and look at our communities. We must see what He sees and feel what He feels so that we can respond in obedience to do what He asks.

Now is the time for us to **SHOW**
His compassion for our communities.

THEN THE KING WILL SAY TO THOSE ON HIS RIGHT,
“Come, you who are blessed by my Father, inherit the Kingdom prepared for you from the foundation of the world. For I was hungry and you gave me food, I was thirsty and you gave me drink, I was a stranger and you welcomed me, I was naked and you clothed me, I was sick and you visited me, I was in prison and you came to me.”

THEN THE RIGHTEOUS WILL ANSWER HIM, SAYING,
“Lord, when did we see you hungry and feed you, or thirsty and give you drink? And when did we see you a stranger and welcome you, or naked and clothe you? And when did we see you sick or in prison and visit you?”

AND THE KING WILL ANSWER THEM,
“Truly, I say to you, as you did it to one of the least of these my brothers, you did it to me.”

Matthew 25:35-40 ESV

THREE STRATEGIC PATHWAYS IN COMPASSION MINISTRY

While there are many needs that exist in every community, we have found three strategic PATHWAYS that have the potential for us to do the most good and produce the most fruit in our region.

They are in the arenas of Education, Food Insecurity/Poverty, and Triage/Trauma. Each of these PATHWAYS have several ways that you and your church can mobilize to help meet needs in your community.

EDUCATION:

There is a myriad of opportunities tied to the discipline of education, such as supporting local schools and their students, faculty and staff, teaching English to international residents, or offering computer classes for the disenfranchised.

FOOD INSECURITY/POVERTY:

There are families around us who lack consistent access to enough food and other basic essentials. Churches can meet these physical needs and their spiritual needs.

TRIAGE/TRAUMA MINISTRY:

When a crisis comes (whether a natural disaster, a crisis pregnancy, or abuse), churches can be on the front lines to help through disaster relief, counseling, chaplaincy, and more.



VARIOUS GATEWAYS IN COMPASSION MINISTRY

Gateways are the doors or bridges in our lives and communities that we can walk through to see the Gospel planted and advanced. A gateway is a specific need that exists in your context that you could have the opportunity to help meet.

Here is a sample list of 50 possible gateways that exist in many communities:

- | | |
|---------------------------------------------------|--------------------------------------------|
| 1. Housing | 26. Education |
| 2. Single Parents | 27. Gender Identity |
| 3. Life Controlling Issues | 28. LGBTQ+ Community |
| 4. Youth | 29. Literacy |
| 5. Disaster Relief | 30. Tutoring/After-School Programs |
| 6. Senior Citizens | 31. Child Care |
| 7. Homebound Seniors/Disabled | 32. Mental Health Counseling |
| 8. Veterans | 33. Biblical Manhood & Husbandry |
| 9. First Responders | 34. Hospice |
| 10. Teachers | 35. Life Skills |
| 11. Special Needs Families | 36. Financial Counseling |
| 12. Health Care Workers | 37. Micro-Relief-Temporary Housing |
| 13. Poverty | 38. Transportation |
| 14. ACES Initiative from Dept. of Education & CDC | 39. Women's Shelters |
| 15. Premarital Couples | 40. Homeless Shelters |
| 16. Foster Families | 41. College Students/Campuses |
| 17. Adoptive Families | 42. New Residents |
| 18. Homeless Families/Children | 43. Sports Leagues/Recreation |
| 19. Displaced Families | 44. Small Business Owners |
| 20. Addiction/Recovery | 45. Section 8 Housing |
| 21. Suicide Prevention | 46. Incarcerated and Their Families |
| 22. Prisoner Re-Entry | 47. Crisis Pregnancy |
| 23. GED | 48. Job Placement |
| 24. ESL Classes | 49. Thrift Store/Food Pantry |
| 25. Immigration Resettlement | 50. Neighborhood Events/Community Calendar |



HOW DO I KNOW WHICH MINISTRY GOD CALLING ME TO DO?

You know God is tugging at your heart to do ministry, but what is His specific calling for you and your church?

Using the acronym, EMERGE, you can discover how He wants to use you!

E

EXPERIENCE different kinds of ministries & opportunities

M

MEET the needs you see all around you

E

ENGAGE God through prayer and scripture to discern His will

R

RESPOND to God's direction for your life and mission

G

GIVE time for God to move in your ministry and mission

E

EVALUATE your joy and passion as you serve in this ministry

THE EDUCATION PATHWAY:

This pathway is essential and present in every community. Education is essential for families, and it is the engine that fuels the future for many. There are 49.5 million students enrolled in preschool to 12th grade in the U.S., as of 2021.

In 2019, 12.3 million of those students qualified as a high-poverty school, which means over 75% of the students receive the free lunch program. We are confident those numbers have doubled since the pandemic.

Around 19.5 million students attended colleges and universities in the fall of 2020. Pennsylvania and South Jersey have close to 400 universities and colleges.

This is why this pathway is so strategic. The opportunities to assist and partner with schools, administrations, and faculty is a huge open door. Each student is part of a family, and each family is an opportunity.

Education is a pathway to so many opportunities... single parent families, immigrant families, international students, homeless students, and the list goes on. This pathway provides a bridge that relationships can be cultivated, partnerships formed, and ministry mobilized in meaningful ways. Let us help you discover ideas and opportunities for you to connect with your community through the pathway of education.



Below are some ministry opportunities to display compassion in the strategic pathway of education:

ADOPT SCHOOLS: Churches may adopt their local school, offering beautification, tutoring, athletic and general support. It can be as simple as providing school supplies and backpacks or more involved as partnering/sponsoring key events and/or initiatives.

DAY CARES/AFTER-SCHOOL PROGRAMS/KIDS CAMPS: Day cares, after-school programs or summer programs offered by churches give families a way to care for their children while they work. Churches can use these opportunities to share Christ with families and to learn about and meet their needs.

ENGLISH AS A SECOND LANGUAGE (ESL): Many immigrants to our region do not understand English and need assistance to learn how to interact in their new environments. ESL classes offer a way to not only teach English but also to introduce the Bible and Jesus to them.

MINISTRY TO COLLEGE STUDENTS: College students, in a very critical time of their lives, are making decisions that will affect the rest of their lives. Many relationships developed in the first six weeks of their college experience dictate that direction. Churches can befriend these students through special events, providing meals, and caring for those who may be alone over the holidays.

MINISTERING TO FAMILIES AFFECTED BY SPECIAL NEEDS: A significant portion of our population is affected by special needs, which includes physical and mental disabilities. Yet, they are one of the groups least reached by churches. Many families face difficulties, including loneliness and exhaustion, which can be helped by church ministries to them.



MINISTRY PROCESS

Compassion Ministry is vital for every follower of Jesus and his church. It is our opportunity to both share and show the love of Christ. Never forget that Compassion Ministry isn't just taught to our churches or communities, but it is something that should be experienced together. There are three keys to having an effective Compassion Ministry in any community.

Create Opportunities: Look around your community and see where there are opportunities for you to bring the power of the Gospel to bear.

Connect People: Connection is the catalyst that unleashes the movement of the Holy Spirit in both the lives of the church and the community.

Cultivate Relationships: Relationships are essential to the success of the movement. Relationships take time to cultivate and may require some sacrifices along the way. Look for ways to build those relationships and partnerships so that you can see the transformation happen.

So, what's next? How do I move from being just located in a specific community to becoming an active presence in that community? There are four stages to seeing this happen:

DISCOVERY STAGE:

This is the stage when you and your leaders look around, look within, and look up so that you can go out. Look around your community and discover what are the particular needs that exist. Look for the greatest areas of brokenness you see and lean into them and see what you discover. Now take the time to look within your church and see what resources you have to help meet those needs. Ask the key questions and leaders what they think, see, and feel about what you've discovered. Then take the time to look up to God and pray for His wisdom and direction on taking the next step.



DIALOGUE STAGE:

This is the stage when you take the time to meet with key people in your community and your church. This is the time to listen and learn from those community leaders of what the specific needs are and how you could help serve and assist them. Then begin the process of enlisting leaders in your church and community to help you as you prepare to be a difference maker. You will also need to equip and train any of the leaders, so they feel confident on what their role is in meeting the need.

DECISION STAGE:

This is the stage where you take all that you have learned up to this point and begin to make some specific decisions on the direction you feel led to go. It is important in this stage to remember that small steps are much better than big steps as you move towards helping meet any need. Consistency and being able to deliver what is promised goes a long way in establishing strong relationships.

DEPLOYMENT STAGE:

This is the most fun stage of all. This is where you begin to engage and start your journey of bringing the hope of the Gospel to your community. You take those steps you have prepared for and begin to bring the light to the brokenness. Always evaluate what you do so that you can learn, adjust, and grow as you serve. We suggest beginning with short-term goals and commitments so that you can see and evaluate any progress you make.

WHATEVER YOU DO, do it from the heart, as something done for the Lord and not for people, knowing that you will receive the reward of an inheritance from the Lord. You serve the Lord Christ (Colossians 2:23-24).

DISCOVERY:

EDUCATION:

Below are some questions to prompt your discovery of your chosen compassion ministry opportunity (such as, adopting schools, daycare, after-school programs, kids camps, ESL, collegiate ministry, or special needs ministry).

What is the brokenness that you see or are aware of in your community concerning this pathway?

How can the Gospel be the Good News to that brokenness?



What are the active related organizations in your community?
(List schools, other ministries, etc.)

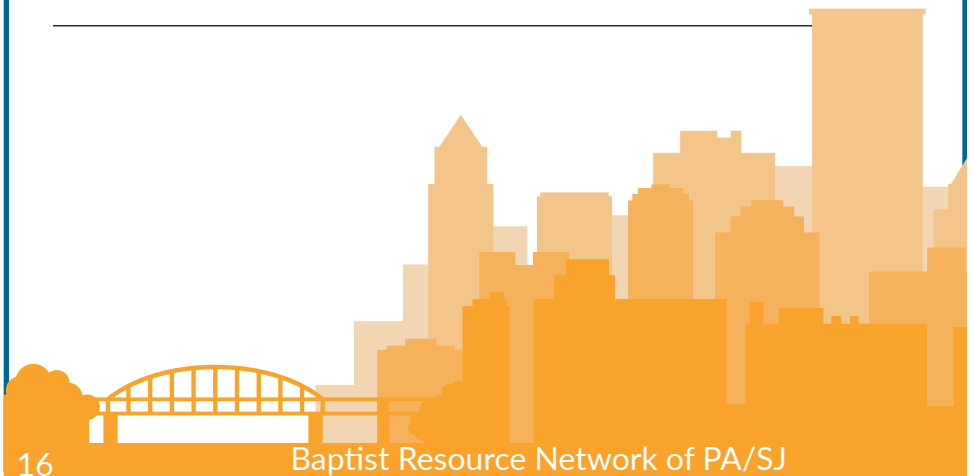
Who is being served (and not being served) by these organizations?

Who are the gatekeepers (leaders, officials, decision-makers) of those organizations? As appropriate, list the names and contact information for those you'd like to meet.

What communication channels exist for you to connect with the organization to initiate ministry? (List phone numbers, websites, social media, and email addresses.)

What are the opportunities for you to build bridges and meet needs in this pathway? Of the above organizations, which could use your church's assistance?

Are there any connections or open doors already established that your church can leverage with these organizations?



What challenges or obstacles can you identify that might prevent you or your church from engaging in this ministry?

How much time are you willing to commit to provide the assistance required?

What resources would you need?

What is your next step?



INTERVIEW

PASTOR GERALD WATERS, PROCLAMATION COMMUNITY CHURCH, PHILADELPHIA

For Proclamation Community Church, located in the Bustleton area of Northeast Philadelphia, George Washington High School (GWHS) appeared to be their gateway into their service community.

Based on a recent needs-based assessment of the GWHS staff, Proclamation Community Church decided to assist with specific supports to improve the students' social and academic experiences. They believe addressing these social needs will enable them to eventually become a resource for those with spiritual needs, even transcending ethnic and racial differences.

This is congruent with the approach that Jesus demonstrated throughout His earthly ministry. Specifically, in the John 6 account of the feeding of the 5,000, Jesus, discerning that the people had a spiritual hunger that needed to be satisfied, chose to first address a physical need with the chief objective of addressing the root of both the spiritual and physical need. That need was the refreshment of the Gospel of Jesus Christ.

To that end, Proclamation Community Church is committed to providing services and supports to the GWHS community by playing a key role in helping students reach their academic and social potential. They sought to accomplish this task by assisting with tutorial services, mentorship and school administration partnerships and by establishing meaningful relationships with student, staff and other community stakeholders by the establishment of a Family Resource Room in the school.

To that end, Proclamation was able to reestablish the Eagles Landing Family Center, a community-based resource hub within the corridors of the school, where families can access formal and informal supports to promote their health and well-being, such as:

- Mutual sense of ownership for parents
- Develop meaningful relationships between school staff and parents
- Provide academically, emotionally, and socially enriching resources for families



- Amalgamate families of diverse backgrounds
- Limit the impact of poverty and reduce the risk of child neglect by strengthening families' protective factors
- Provide and outreach for the detection of the Gospel and to prepare hearts for the reception of the Gospel.

The Family Center will address concrete needs like housing assistance, child care, food access, and other things that may contribute to social isolation. These initiatives can prove to strengthen parental capacity and ability to deal with stress.

The church also endeavored to provide an atmosphere that shows the parents and students that they are sensitive to the challenges they are faced with and provide a comfortable space to enhance their visitation experience:

- Sofa, and adult- and child-sized chairs, tables, and desks
- Coffee/Tea
- Homework help resources
- Current newspapers and magazines
- Conduct parent and family workshops linked to school goals, such as help with homework, family reading, math, science, and art.
- Conduct parent-child activities for the after-school program.
- Offer adult education programs, such as adult literacy, ESL or GED classes, computer/word-processing classes, financial planning, and consumer education.

Pastor Gerald is thankful for mission teams and BRN evangelism grants which have come to help refurbish the room and to otherwise assist in this ministry. But he does have a caution for those who want to do the same: "The planter/pastor must be constant in prayer and aware of the worldly and demonic opposition to any works that are designed to glorify God even in a school," he said. "Their resolve must be strong and faith must be exercised through the process remembering that the power and purpose of our Lord will always prevail."

For current data that outlines success of family resource centers in various regions, visit online at www.casey.org/family-resource-centers-appendix.



DIALOGUE:

EDUCATION:

Once you've had a chance to explore the different ministry options, here are some questions to discuss with your ministry team and those with whom you seek to minister.

What did you learn from meeting with the gatekeepers/ organizations?

Based on what you have discovered, where do you sense God is encouraging your church to serve?

What kind of needs could your church meet? How do the skills of people in your church match up with those needs?



List skills and resources from your church or others in the community that you have available to meet those needs.

How are you going to enlist or recruit volunteers (from your church or the community)?

What training or clearances would volunteers need to have before engaging in ministry?

As you pray, write down what you hear God saying about this ministry opportunity:

INTERVIEW

DEBBIE TOONE, EAST SHORE BAPTIST CHURCH, HARRISBURG

Debbie Toone started teaching English as a Second Language (ESL) at East Shore Baptist Church shortly after she and her family first moved to Pennsylvania. The church had a Hispanic and a Ukrainian congregation so the classes were comprised of Spanish, Ukrainian, Chinese, and Brazilian students. Debbie taught alongside Gretchen Roderick, a former IMB missionary to India, and three other teachers.

The Baptist Convention of Pennsylvania/South Jersey (now Baptist Resource Network) heard about their ministries and started giving them monthly grants to purchase books for the students. After a year, the convention asked Debbie if she wanted to become a North American Mission Board-certified ESL trainer (to certify other teachers). They paid for her to travel to Oklahoma Baptist University for an intensive week-long course.

For the next 15 years, Debbie continued the church ESL classes but also traveled around PA/SJ leading the 16-hour ESL workshops at various churches and locations. Some of the memorable ones included Winfield Baptist, Cranberry, Bethel, Cultivate, Dallas, East Shore Baptist, and even once to New England Baptist Convention and more recently, some missionaries in an unnamed country. As manuals were updated, she re-certified many times, at places such as Glorietta, Shocco Springs and through Georgia Baptist (which has the largest SBC literacy ministry).

Throughout our region, Debbie and other trainers taught on the following:

- Adult Reading and Writing for adults who could not read well
- Tutoring Children and Youth who needed help with school work
- English as a Second Language for people who needed to learn to speak English better.

Her most recent workshop was in 2021 at Lighthouse Baptist in Harrisburg, which provides a location for Bethany Church, a BRN Nepalese church plant started by Pastor Dawa Tamang.

The pastor at Lighthouse wanted to offer ESL classes to Dawa's congregation on Sunday afternoons, and 10 people were certified to teach.

Some of Debbie's fondest memories include when sometimes in summer when she conducted ESL classes, her children would accompany her. To this day, they all have fond memories of playing learning games with the students. Another time, an American woman learned to read and write English with a tutor and accepted Jesus as her Lord and Savior and joined her church.

She also enjoyed meeting people in the local restaurants around the church who were learning English for the first time. Debbie would use Bible stories to teach the English classes, and it gave her joy to see students learn not only English, but about Jesus!

TO BEGIN A MINISTRY:

Even though East Shore Baptist Church in the 1990s started their ESL ministry without training, Debbie advises churches to take the time to receive some training before getting involved in the ministry.

The SBC National Literacy Missions Partnership provides literacy training online. The training is now eight hours online (self paced, one month to complete) followed by a four-hour certification (hands-on, practical piece). It costs \$35 (plus the manual may be printed for a cost).

National Literacy Missions Partnership
www.LiteracyMissionsSBC.net

After this, the Lord appointed seventy-two others and sent them on ahead of him, two by two, into every town and place where he himself was about to go. And he said to them, "The harvest is plentiful, but the laborers are few. Therefore pray earnestly to the Lord of the harvest to send out laborers into his harvest" (Luke 10:1-12 ESV).

DECISION:

EDUCATION:

This is the stage where you take all that you have learned up to this point and begin to make some specific decisions on the direction you feel led to go.

Based on what you have discovered, where do you sense God is encouraging your church to serve? Who are you serving?

What do you need to serve them well?

When and how long will you serve?



How can you evaluate and adjust as necessary?

What expectations do you have for all involved? Write them down in a Joint Venture Partnership agreement* so there isn't any confusion. Adapt as needed.

As you pray, write down what you hear God saying now about this ministry opportunity:

**Contact BRN's Help Desk for more information.*



DEPLOYMENT:

EDUCATION:

This is where you begin to engage and start your journey of bringing the hope of the Gospel to your community.

How can you assist or encourage your volunteers as they serve?

How do you evaluate and adjust as you serve?

How do you celebrate our successes and your volunteers?
(write specific ways)?



How do you communicate with the gatekeepers to find out how you are doing/did?

What do you do next?

As you pray, write down what you hear God saying now about this ministry opportunity:





SHOW

WHO'S ON YOUR WATCH?

Every 4.2 minutes, a person in PA/SJ dies without Christ. Let's show Christ's love before it's too late!

#LovePASJ's Phase 2 kit seeks to help churches evangelize the neighborhoods where they did exegesis and prayerwalking. As a natural next step to learning about their communities, Phase 2 of "KNOW, SHOW, GROW" offers resources to equip participants to start meeting revealed needs through compassion ministries and evangelism. This year's kit also highlights evangelism resources available for individuals and groups.

Haven't had a chance to work on Phase 1 yet? No worries! Contact the BRN's Help Desk (helpdesk@brnunited.org) today to get your kit!

www.lovepasj.com

FREE RESOURCES

to help you better love your neighbors

Phase 2 resources include Compassion Ministry Planning Guides, a Prayer Guide, Small Group Bible Study, Evangelism Tracts, an EvangeCube, a Gospel Presentation App, and more!



KNOW | SHOW | GROW

Order your kit at
LOVEPASJ.COM



*For additional resources and information
on loving your community and sharing the Gospel,
please reach out to the*

Baptist Resource Network of PA/SJ:

email: helpdesk@brnunited.org

call or text: (717) 652-5856

or visit online:

www.brnunited.org | www.lovepasj.com



A stylized graphic of a city skyline in shades of blue and orange. The skyline features various building silhouettes, including a prominent tall building with a pointed top. In the foreground, there are several smaller houses with gabled roofs and windows. The background is a gradient of orange and yellow, suggesting a sunset or sunrise.

Baptist Resource Network of PA/SJ
4620 Fritchey Street, Harrisburg, PA 17109
brnunedited.org | lovepasj.com

*“We must do the works of Him who sent Me while it is day.
Night is coming when no one can work” (John 9:4).*